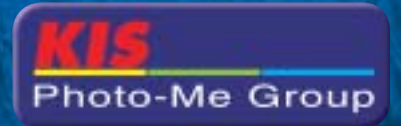




DKS 1530

The perfect evolution of a minilab





(1)

An excellent long-term investment...

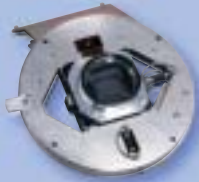
The DKS 1530 boosts your business potential while reconciling your anxiety of cost and performance.

Our DKS 1530 offers you the perfect balance, delivering print quality that will astound your customers.



(1) The DIMA Award rewarded the DKS 1500 for its printing quality resulting from the MSB exposure system, also embarked on the DKS 1530.

Breakthrough technologies to improve your print quality.



> MSB™:

Revolutionary exposure system, reliable (the only 5 year Warranty in the Industry) allowing **340 dpi in 8x12" (20x30 cm)**

im-1500 film scanner



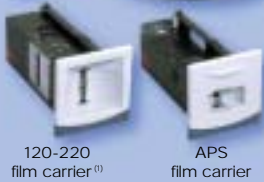
> im-1500 film scanner:

- Productivity: 56 films/hr⁽⁴⁾
- ADSR: the im-1500 film scanner uses infrared detection to automatically detect and digitally remove dust and scratches from scanned film.
- 2 High definition Kodak KLI CCDs, 6 000 pixels

> Eye-Tech Digital Science:

the software that **automatically** enhances and improves your photos. Give the state of the art photo quality to your customers.

135 film carrier



120-220 film carrier⁽³⁾

APS film carrier



eye.tech
DIGITAL SCIENCE

340 dpi
in 8x12" (20x30 cm)

1100 prints/hr⁽³⁾
in 3.5x5" & 4x6" (9x13 cm & 10x15 cm)
for all traditional and digital inputs



Versatile, the DKS processes your media perfectly.

> Traditional inputs

135 films, 120-220 films⁽¹⁾, APS films, mounted slides⁽²⁾



> Digital inputs

Compact Flash™ type I & II, Memory Stick® & Memory Stick Pro®, Smart Media™, MMC, SD Card, xD Picture Card™, IBM MicroDrive™ Card



Floppy disk, CD, 250 Mb ZIP⁽¹⁾

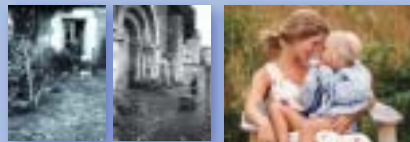


Bluetooth^{®(1)}, Wi-Fi[®] and 2 front side USB ports for digital photo transfer from digital cameras, cameraphones and PDAs.



> Prints

A4 flatbed scanner⁽¹⁾



Offer a wide variety of DKS services: your imagination is the limit!



Prints from 3.5x5" (9x13 cm) up to 8.25x12" (21x30 cm) and 10x12"⁽¹⁾ (25x30 cm)



- Contact sheets
- Calendars
- Greeting cards
- Frames/Borders
- Add custom front side text
- Business cards
- Passport prints
- Package print sheets
- Compositions
- CD index/CD Case Cover



- KIS Photo Viewer: your customers can enjoy their digital photos on their own computer



DKS Customer Station

- Offer your customers a fast, secured, self-service with a constant professional printing quality
- Customers select and edit the digital photos they want on paper
- You control the printing according to your payment policy

(1) Optional.
 (2) Future option.
 (3) Using SP 20 EM chemistry, in high resolution.
 (4) 24 exposures film, in automatic mode, HR, scan only, with index and without dust and scratch removal - 43 films/hr with dust and scratch removal.
 (5) Data subject to change without prior notice from manufacturer.

Not just a new machine, but
a tool to simplify your work...



Simple operation

- > User-friendly and intuitive interface: up to 40 images on the screen
- > Machine and format status simply and clearly displayed: print count, prints in process, paper processor status, paper magazines loaded (paper type, paper size and paper length remaining).
- > Concentrated chemistry: no-mixing & easy chemical changes, automatically monitored and metered.
- > Modular design: simple access to all areas of the system for easy maintenance.
- > Remote maintenance: service diagnostics and access via internal modem & "pcAnywhere™ software" (requires dial-up phone line access to DKS).
- > Ergonomics: adjustable work area with tilting monitor for sit-down or stand-up work flow, integrated light-box.

Maximum flexibility

- > 3 click express service: the unique DKS archiving feature allows the user to recall over 50,000⁽⁵⁾ previously printed images that can be retrieved with previous corrections and crop settings - Reprint, enlarge or enhance with as little as 3 clicks !
- > Connectivity: LAN Ethernet to PC or MAC⁽²⁾, Wi-Fi®.

Offer more
to your customers

A new service era

- > IPS⁽²⁾ Internet Print Service: an online digital photo printing service to expand your business.



Add a new dimension to your business

- > DKS 1530: open architecture allows you to widen your business opportunities.
- > Peripherals⁽¹⁾: DKS WorkStation, DKS Customer Station, A4 flatbed scanner, large format printer⁽²⁾.



Large format printer⁽²⁾

Technical specifications

Type : Digital printer

Processing capacity⁽¹⁾: 1100 prints/hr in 3.5x5" (9x13 cm) and 4x6" (10x15 cm) for traditional and digital inputs

Exposure system: MSB™ (Microlens Sharpened Beam), 340 dpi in 8x12" (20x30 cm)

Paper loading: a bottom paper magazine (simple or double track)

Paper: any RA 4 compatible silver-halide paper

Paper width: from 89 to 210 mm (3.5" to 8.25")

Paper advance: from 102 to 304 mm (4" to 12")

Printing formats: from 3.5x5" (9x13 cm) up to 8.25x12" (21x30 cm) and 10x12"⁽²⁾ (25x30 cm)

Chemistry: SP 20 EM or other homogeneous monopart RA 4 chemistry

Processing time: 129 sec. dry to dry⁽¹⁾

Scanner resolution: up to 2700 x 4000 pixels, high resolution (135 films)

Traditional inputs: 135 films, APS films, mounted slides⁽⁴⁾, 120-220 films⁽²⁾, A4⁽²⁾

Digital inputs: floppy disk, 250 Mb ZIP⁽²⁾, CD-ROM, all digital camera memory cards⁽³⁾: Compact Flash™ type I & II, Memory Stick® & Memory StickPro®, Smart Media™, MMC, SD Card, xD Picture Card™, IBM MicroDrive™ card, Wi-Fi®, Bluetooth®⁽²⁾

Connections:

- LAN Ethernet
- Integrated Wi-Fi® compatible card
- 2 USB ports for direct access

Optional peripherals:

- DKS WorkStation
- DKS Customer Station
- External workstation / Computer (PC or Macintosh)
- A4 flatbed scanner
- Large format printer⁽⁶⁾

Image processing algorithms such as:

- Single-channel type colour and density analysis
- Contrast adjustment according to film exposure

Anti-dust and scratch software

Image corrections⁽⁴⁾:

- Red-eye removal
- Chromatic and sepia effect
- Density, contrast and saturation
- Flash effects and backlight
- Density "spot" function: to adjust the image density according to an area designated by the mouse and cursor
- Colour "spot" function: to adjust the image chromatic balance according to an area designated by the mouse and cursor
- Automatic enhancement of digital files in one click
- Sharpness enhancement

Printing functions:

- Printing modes: full image, full paper, or automatic advance
- White borders
- Cropping (zoom for center and off-center cropping)
- Frames, calendars, greeting cards, business cards
- Passport prints
- Composition of several formats on 1 print - Package print sheet
- Retouching and special effects
- Add custom front side text

Index:

- From any sources, on any paper formats
- Personalized with a logo chosen in the logo library - up to 8 logos can be maintained

Contact sheets:

- High resolution option for detailed selection
- Personalized with a logo chosen in the logo library

Back printing:

- 2 lines of 40 letters maximum
- Multiple options - Customized versions can be created and stored

Sorter: dual-lane individual stacks; up to 20 orders

Archiving:

- More than 50 000⁽⁵⁾ images in memory archiving
- Burn or write image to floppy disk, ZIP⁽²⁾ and/or CD-ROM

Operating System: Windows XP

Monitor: high definition TFT LCD 15" screen

Options:

- 120-220 film carrier
- 10x12" (25x30 cm) prints
- 250 Mb ZIP
- Bluetooth®
- Internet Print Service⁽⁶⁾
- a top simple track paper magazine kit

Dimensions:

- 1 845 (W) x 1 619 (H) x 1 071 (D) mm
72.6" (W) x 63.7" (H) x 42.2" (D)

Floor surface: 1,72 m² ; 18.5 sq ft

(1) Using SP 20 EM chemistry in high resolution.

(2) Optional.

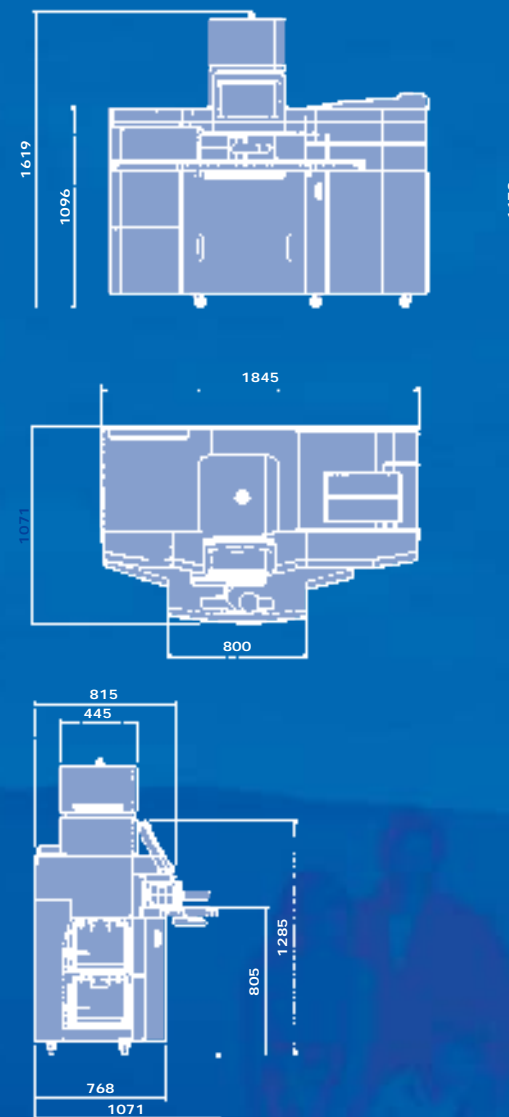
(3) Some formats accessible via an optional Compact Flash™ adapter, capability determined by card/card reader manufacturer specifications.

(4) All corrections, with the exception of red eye removal, can be applied to 1 image, to a selection of several images or to all the images of an order in 1 operation.

(5) Data subject to change without prior notice from manufacturer.

(6) Future option.

Dimensions in mm :



Product manufactured under a quality management system certified to ISO 9001/2000 by AFAQ